

# Avaya IP Office Essential

## Setup for the Panasonic KXTGP-50 SIP Cordless

### Telquest Tech Support

You must have at least one 3<sup>rd</sup> Party SIP license in the IPO KSU  
 Navigate to this area in the KXTGP-50 web browser.  
 Only change the areas that are indicated by

**Panasonic**  
**KX-TGP500B04**

Status | Network | System | **VoIP** | Telephone | Maintenance

Web Port Close

**VoIP**

**SIP Settings**

- Line 1
- Line 2
- Line 3
- Line 4
- Line 5
- Line 6
- Line 7
- Line 8

**VoIP Settings**

- Line 1
- Line 2
- Line 3
- Line 4
- Line 5
- Line 6
- Line 7
- Line 8

**SIP Settings [Line 1]**

**Phone Number**

Phone Number: 8111

Line ID:

**SIP Server**

Registrar Server Address: 192.168.111.130

Registrar Server Port: 5060 [1-65535]

Proxy Server Address: 192.168.111.130

Proxy Server Port: 5060 [1-65535]

Presence Server Address:

Presence Server Port: 5060 [1-65535]

**Outbound Proxy Server**

Outbound Proxy Server Address: 192.168.111.130

Outbound Proxy Server Port: 5060 [1-65535]

**SIP Service Domain**

Service Domain:

**SIP Source Port**

Source Port: 5060 [1024-49151]

**SIP Authentication**

Authentication ID: 8111

Authentication Password: ....

**Callouts:**

- This Tab...
- Select a Line
- SIP Extension Number In the IP Office
- LAN IP Address Of the IP Office
- SIP Extension Number in the IP Office
- 4 digit SIP Password set In the IP Office

## Accessing the KXTGP-50 Web Browser

The KXTGP – 50 Web Browser is disabled by default.

To allow access:

Press the Menu button IN

Dial #534 (POUND 534)

You will see “Embedded Web” in the LCD

Select ON

Press the Menu button IN

## How to find the KXTGP – 50 IP Address

Press the Menu button IN

Dial #501 (POUND 501)

You will see “IP Address” in the LCD

The IP Address is just below it

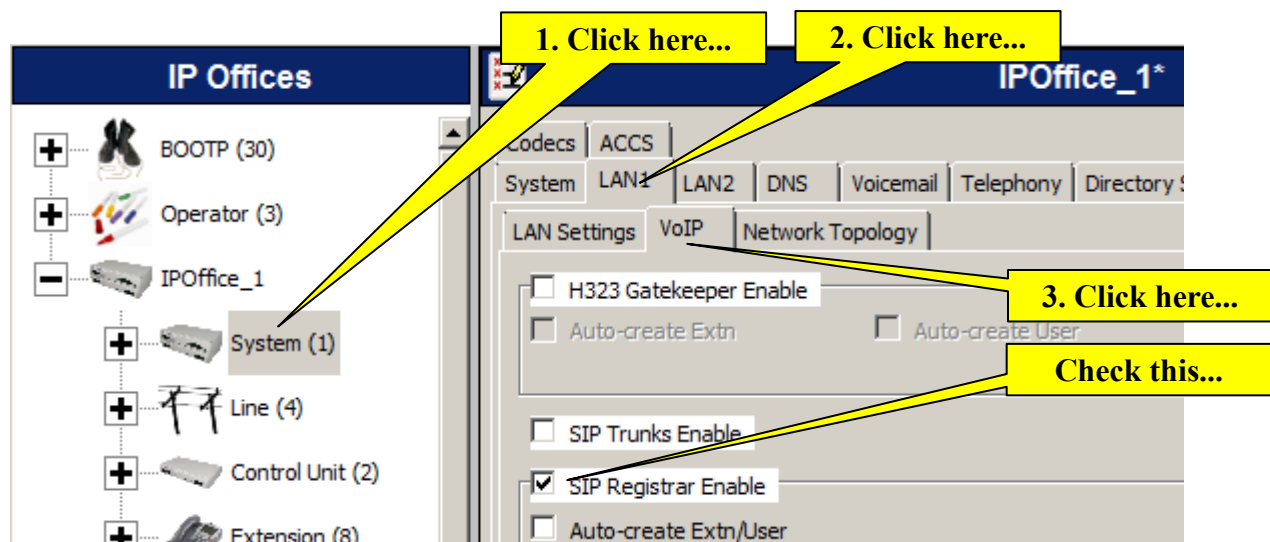
Browser Default Info:

Logon: admin

Password: adminpass

**This unit requires an Avaya 3<sup>rd</sup> Party SIP Endpoint License**

You must turn on the SIP Registrar. Its position will be different in the various releases of IP Office.



Set the SIP Password here:

**1. Click here...**

**2. Select SIP...**

**3. Click here...**

**4. Click here...**

**5. Enter a 4 Digit Password**

**6. Click here...**

**7. Check this box...**